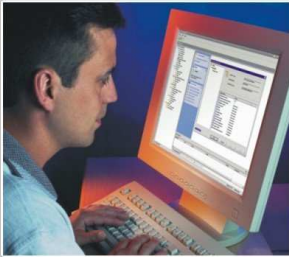


VNV SOFTWARE Pvt. Ltd.

Knowledge



Customer Support



Technology



Happy Customers



ADVANCE SOFTWARE TECHNOLOGY.

Licensed Software, Ready to Use Business Application Software's, Customised Software Development, Consultancy, AMC of Software's, Web Site Development and Maintenance, Web Promotions, WAP enabled website.



Corporate Office

370-A/3, Basement, Chirag Dilli
New Delhi - 110017
Tel - 4183-4899, 4183-4884
Mob - 9811048994, 9899948994
Email - info@vnv.in
Web - www.vnv.in

Customer Support Center

Mumbai Hyderabad
Bangalore Kolkatta
Ahmedabad Jalpur
Pune

CPMS

Carpet Production Management System.

Mini ERP – 2007

Enterprise Solution for Carpet Manufactures and Exporters

CPMS is a fully automated carpet production management system, which takes care of complete operation of Order receipt from the buyer till shipment of carpets. It is a complete production, planning and works monitoring software.

Can be used by Rug and Durries manufacturing/exporters also.

Some Key Features :-

- 1) Buyer Order Management System.
- 2) Order wise Production Summary, gives details of order received, qty shipped, balance at production, pending and shortage.
- 3) Looms wise production and work in progress tracking system.
- 4) Work in progress, Tracking and Work done reports.
- 5) Projection of arrivals as per work done
- 6) Production analysis of looms and suppliers.
- 7) Tracking of extra stocks in hand and in looms.
- 8) Stock manager for managing finished carpets.
- 9) Tracking of Finished and Unfinished Carpets
- 10) Tracking of washing
- 11) Tracking of Defective carpets
- 12) Bora Manager management of wool movement for next mounting
- 13) Wool requirement manager for tracking of wool requirement
- 14) Wool Management system for managing wool requirement details.
- 15) Production forecasting and analysis and more.
- 16) Wool Inventory Manager.
- 17) Generates automatic requirement of wool for production of carpet.
- 18) Carpet Design production control manager.
- 19) Host of Tabular reports like Buyer summary, Mounting summary, Stocks Summary , Shorts, Arrivals, Extra Stock ect..

Format of Tabular reports

Designs X Quality X Gnd	Sizes -> 2x2	4x4	6x6	8x8	10 x 10
vnv123 x 10/12 x Rb/Yl	1	2	5	9	3
Vnv200 x 10/12 x Gr/Cr	0	0	10	10	0	

Modules

CORE MODULE :- MASTER DATA BASE AND ACCESS CONTROL SYSTEM

(Must of Running the Package)

1. Design, Size, Ground, Quality and Category Database Manager
2. Supplier/Contractor and Weaver Manager
3. Carpet Order Management, To Be Allocated orders, Allocated it reports

BUYER MANAGEMENT

- A) Buyer Order Management – Country Wise, Currency Wise
- B) Buyer Order Status and Follow-ups
- C) Order Reservation and Status etc

PRE-PRODUCTION

WOOL CONSUMPTION , MASTER WOOL INVENTORY, AND CONTRACTOR DYEING INVENTORY MANAGEMENT

- A) Wool Dyeing Plan & Consumption Masters for a Design
- B) Wool Inventory – Godown
- C) Dyer Job Card and Inventory Process
- D) Wool Requirement Manager – Order wise/Buyer/Dyeing Plan
- E) Dyeing Plan History and Analysis – As per Buyer

ON LOOMS MANAGEMENT (CARPET PRODUCTION)

- A) Bora Management and Inventory
- B) Mounting Management for Contractors/Looms
- C) Work in Progress Manager
- D) Finished Carpet Receipts and Inventory Manager
- E) Carpet Finishing/Washing Manager

CARPET DESIGN INVENTORY MANAGEMENT

- A) Carpet Design Inventory and Production Manager.

FOR DETAILS AND DEMO –

CONTACT RITESH AWASTHI @ 93140-48994

VNV SOFTWARE PVT LTD

CORP OFFICE : 370-A/3,CHIRAG DILLI, NEW DELHI-110017

TEL – 011-4183-4899,4183-4884, 9811048994

EMAIL – INFO@VNV.IN

WEB – WWW.VNV.IN

CONTACT PERSON – MR GAJENDRA KUMAR

Cost of System (Module Wise)

- Core Module – @ Rs 99,000/-
- Buyer Management Module @ Rs 75000/-
- Wool Consumption Module – Rs 75000/-
(With Wool Requirement,Dyeing Plan)
- Dyeing Plan History/Analysis Module – 45000/-
- Master Wool (Godown) Inventory Module – Rs 25,000/-
- Dyeing Process, Inventory Module and Contractor Inventory Module- Rs 95000/-
- Bora Management & Contractor (Inventory and Billing) – Rs 150,000/-
- Mounting Management , Bora Tracking,Carpet Status – Rs 75000/-
- Carpet Finishing, Washing and Inventory Manager – Rs 45000/-
- Design Management – Rs 45000/-
- Payroll Software – Rs 7500/-



PAYMENT OPTION –

1. 30 % ADVANCE ALONG WITH ORDER.
2. As per mutually Agreed Upon.

IMPLIMENTATION AND TRAINING CHARGES

Rs 7500/- PER MONTH

AMC – 15% of Billing Amount

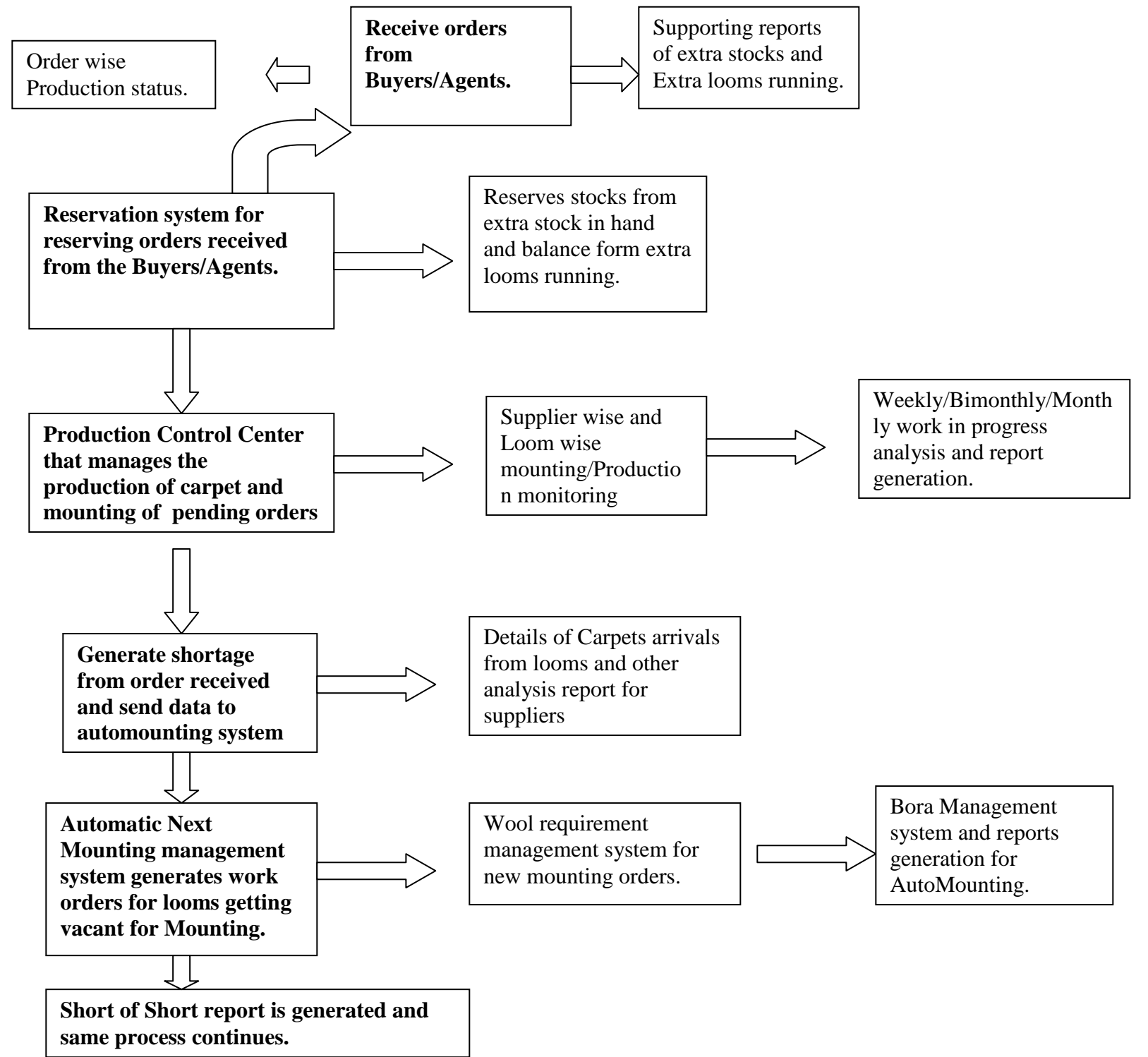
OUTSTATION INSTALLATION ALLOWANCE

1. LODGING TO BE PROVIDED BY CUSTOMER FOR ENGINEERS.

PROJECT DURATION

STANDARD DURATION – 6 MONTHS FROM DATE OF ORDER.

MINI ERP C P M S - 2007



Design, Size, Ground, Quality and Category Manager

One of the main module that maintains the master required for CPMS.

Size data base which holds the various details of carpets like area in feet and meters also under which category it falls like runner, oval, rectangular, square, circle etc.

Design holds the various designs details along with its quality.

Ground – Holds the design ground details like blue/green, red/yellow etc.

Generates report like size master, design master and ground masters list.

Buyer and Order Manager

This module takes care of buyers orders with order status in Design – Gnd – Size – Quality wise form with Total order qty, Qty shipped, Qty in stock, Finished Qty, Unfinished Qty, Qty in Washing, Qty on Mounting, Arrivals in 15,30 , 45 days and later and balance pending qty.

New order manager assigning new order number , categorizing order in order of priority like Urgent, Emergency, Today, Extra order, Date of Delivery etc.

Generates reports like Buyer list, Buyer order analysis and status.

Order Reservation System

Order reservation system takes care of booking order received from buyer and check the stock in stores and then against mounting

Generates Stocks reservation reports, Mounting reservation reports for a order, supplier/contrator wise reports. Shorts after reservation.

Supplier/Contractor, Mounting and Weaver Manager

Supplier/Contractor manager takes care of contractor who makes carpets as per the order. It also has a weaver manager which keep track of looms the supplier has and the size, and name of the weaver. It also keep the data of size the loom can handle and also generate the capacity for the supplier.

Mounting manager keep track of mounting details on each loom with details like size, design , ground, quality, date of issue, whether reserved under order or not, approx date of completion and last work done tracking.

Generates supplier wise mounting, Arrival reports in next 15 days, 30 days, 45 days and later, Details of Urgently required mounting, Extra mounting etc

Design wise mounting details, Size wise mounting details etc.

Work Done Manager.

Work done manager takes care of weekly work done on loom of different contractors and applies special formulae to predict the date of completion of carpet.

It can also generate the production details of an area on weekly basis, order wise basis and supplier basis. Generates work in progress checklist, production summary etc
Design wise work done etc.

Stock Manager

Stock Manager takes care of carpets coming from looms and other incomings. It assign a carpet number for each carpet received, and stores information like supplier details, date of arrival, loom details, carpet weight and the status of the carpet like whether it has gone for washing or any defects or the carpet is finished for shipment.

It also keeps track of carpet going for washing. It stores date of issue for washing, date of receipt.

Generates reports like stock status, daily arrival summary, supplier wise carpet arrival , order wise carpet received etc.

Wool Inventory and Wool Requirement Manager

Wool Inventory manager takes care of wool kept in rack in stores in the form of cones and it keep tacks of wool in hangs in the form of bales which comes the dyer.

It also keeps track of minimum inventory level, gross wt, dyeing loss, opening loss, cone gain, net wt etc.

Issue manager keeps track of issue from hang to stores, store to supplier, issue of extra wool to suppliers etc.

Generates issue summary, stock status reports, issue registers etc.

Design wise Wool Requirement Manager

Wool requirement manager generates wool requirement for next mounting for the design to be mounted next. It also has the facility to check the stocks in store and hangs and generate a statement of shorts of colors to be ordered. It can generate the wool requirement quality wise like 40 count, 110 count etc. It contains masters for calculating consumptions for a design as per standards fed into the masters.

It generates reports like color wise wool requirement, design wise wool requirement , Order wise wool requirement etc.

Bora Manager

Bora Manager module takes care of bora packing for a design in stores. It generate checklist of shades for each design with kg of wool to be packed for each design. With this checklist the packer can fill the exact amount of wool sent to the weaver and any short supply of shades and then it print the final bora shade list with actual quantity sent and the short supply. It also creates a unique card number to bora which is used in mounting to identity the carpet before completion.

It generates bora-packing list for stores, final checklist for supplier/weaver, list of short supply etc.

Challan and Shade wise covering Manager

Challan manager is used to create the Challan for a supplier in which the bora is supplied to the weaver/supplier. It contains summary of the list of bora sent to the weaver .

It also includes the details of Cotton and Tani sent along with boras in Challan.

Challan manager also has provision for send short shades for earlier Challan and also can manage extra wool sent to the weaver.

It generates Challan covering, Shade wise covering, Design wise covering, Extras stock covering and also the party accounting.

Design Inventory and Production Manager.

Design production control system is an inventory system for design with tracking of design on paper with its life of three issues. It keeps track of design in stocks and in mounting. Every design is given a unique design number with a life of standard three issues after the design gest expired.

This module can generate statement for placing of making of new designs as per the stock in hand by taking reference of buyer order and generates a statement of shorts.

It generates stocks status report, next order report, supplier wise design list etc...

Payroll/Salary System

Employee manager for recording emplovee personnel details like persent and permanent address, tel nos , references etc.

Advance/Loan Manager with installment manager.

Automatic Attention Generation.

Pay Slips, Pay Bills, Bank Transfers etc

Pf and Esi Manager

Monthly Pf and Esi Statements, Form 5,10

Annual Pf Returns – 3A,6A

Annual Esi Returns – From 6 and 7

Old Salary Histroy.